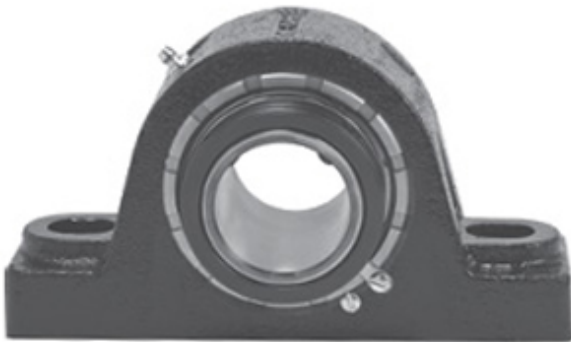




Wuxi LZH Bearing Co., Ltd.

2 Inch | 50.8 Millimeter x 3.125 Inch | 79.38
Millimeter x 2.25 Inch | 57.15 Millimeter LINK
BELT PKEB22432HK5 Pillow Block Bearings



PKEB22432HK5 Bearing 2D drawings and 3D CAD models

Bearing No. PKEB22432HK5

Category	Pillow Block Bearings
Inventory	0.0
Manufacturer Name	REXNORD
Minimum Buy Quantity	N/A
Weight	5.45
EAN	0793699758337
Product Group	M06288
Number of Mounting Holes	2
Mounting Method	Concentric Collar
Housing Style	2 Bolt Pillow Block
Rolling Element	Spherical Roller Bearing
Housing Material	Cast Steel
Expansion / Non-expansion	Expansion
Mounting Bolts	5/8 Inch
Relubricatable	Yes
Insert Part Number	B22432HL
Seals	Floating Labyrinth
Housing Configuration	1 Piece Solid
Inch - Metric	Inch
Other Features	Double Row Single Collar Extended Inner Race With Set Screw
Long Description	2 Bolt Pillow Block; 2" Bore; 2-1/4" Base to Center Height; Concentric Collar Mount; Spherical Roller



Wuxi LZH Bearing Co., Ltd.

	Bearing; Relubricatable; Cast Steel; Floating Labyrinth; Expansion
Category	Pillow Block
UNSPSC	31171511
Harmonized Tariff Code	8483.20.40.80
Noun	Bearing
Keyword String	Pillow Block
Manufacturer URL	http://www.rexnord.com
Manufacturer Item Number	PKEB22432HK5
Manufacturer Internal Number	0175833
Weight / LBS	12
Actual Bolt Center to Center	6.3 Inch 159Millimeter
d	2 Inch 50.8 Millimeter
Nominal Bolt Center to Center	6.3 Inch 160 Millimeter
Bolt Spacing Maximum	0 Inch 0Millimeter
B	2.25 Inch 57.15 Millimeter
Bolt Spacing Minimum	0 Inch 0Millimeter
D	3.125 Inch 79.38 Millimeter