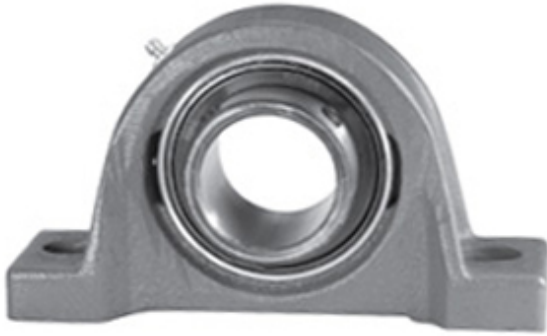




## Wuxi LZH Bearing Co., Ltd.

1.25 Inch | 31.75 Millimeter x 1.563 Inch | 39.69  
Millimeter x 1.688 Inch | 42.875 Millimeter LINK  
BELT P3U2E20H Pillow Block Bearings



P3U2E20H Bearing 2D drawings and 3D CAD models

Bearing No. P3U2E20H

Category	Pillow Block Bearings
Inventory	0.0
Manufacturer Name	REXNORD
Minimum Buy Quantity	N/A
Weight	1.23
EAN	0662327120559
Product Group	M06110
Number of Mounting Holes	2
Mounting Method	Set Screw
Housing Style	2 Bolt Pillow Block
Rolling Element	Ball Bearing
Housing Material	Cast Iron
Expansion / Non-expansion	Non-expansion
Mounting Bolts	1/2 Inch
Relubricatable	Yes
Insert Part Number	UG2E20HL
Seals	Floating Labyrinth
Housing Configuration	1 Piece Solid
Inch - Metric	Inch
Other Features	Single Row   Standard Duty   Standard Backing   Wide Inner Race
Long Description	2 Bolt Pillow Block; 1-1/4" Bore; 1-11/16" Base to Center Height; Set Screw Mount; Ball Bearing;



## Wuxi LZH Bearing Co., Ltd.

	Relubricatable; Cast Iron; Floating Labyrinth; Non- expansion
Category	Pillow Block
UNSPSC	31171511
Harmonized Tariff Code	8483.20.40.40
Noun	Bearing
Keyword String	Pillow Block
Manufacturer URL	<a href="http://www.rexnord.com">http://www.rexnord.com</a>
Manufacturer Item Number	P3U2E20H
Manufacturer Internal Number	5812055
Weight / LBS	2.7
d	1.25 Inch   31.75 Millimeter
Bolt Spacing Minimum	0 Inch   0Millimeter
Nominal Bolt Center to Center	4.8 Inch   121 Millimeter
B	1.688 Inch   42.875 Millimeter
Bolt Spacing Maximum	0 Inch   0Millimeter
D	1.563 Inch   39.69 Millimeter
Actual Bolt Center to Center	4.6 Inch   117.5Millimeter