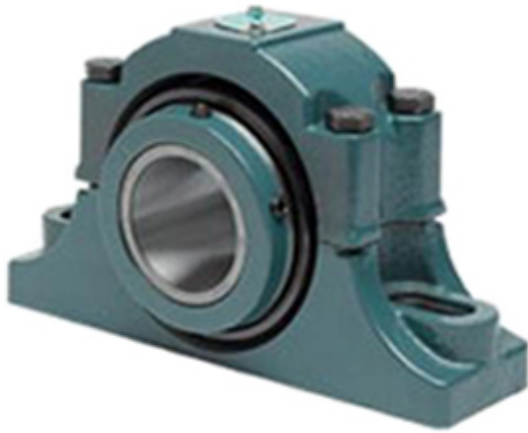




Wuxi LZH Bearing Co., Ltd.



3.188 Inch | 80.975 Millimeter x 5 Inch | 127
Millimeter x 3.75 Inch | 95.25 Millimeter DODGE
P2B-EXL-303R Pillow Block Bearings

Bearing No. P2B-EXL-303R

P2B-EXL-303R Bearing 2D drawings and 3D CAD
models

Category	Pillow Block Bearings
Inventory	0.0
Manufacturer Name	ABB MOTORS AND MECHANICAL INC
Minimum Buy Quantity	N/A
Weight	33.142
EAN	0782476587468
Product Group	M06288
Number of Mounting Holes	2
Mounting Method	Concentric Collar
Housing Style	2 Bolt Pillow Block
Rolling Element	Tapered Roller Bearing
Housing Material	Cast Iron
Expansion / Non-expansion	Non-expansion
Mounting Bolts	7/8 Inch
Relubricatable	Yes
Insert Part Number	S1U-EXL-303R
Seals	Triple Lip Contact
Housing Configuration	2 Piece Split
Inch - Metric	Inch
Other Features	Double Row Double Collar With Set Screw
Long Description	2 Bolt Pillow Block; 3-3/16" Bore; 3-3/4" Base to Center Height; Concentric Collar Mount; Tapered Roller



Wuxi LZH Bearing Co., Ltd.

	Bearing; 10.12" Minimum Bolt Spacing; 11-3/4" Bolt Spacing Maximum; Relubri
Category	Pillow Block
UNSPSC	31171511
Harmonized Tariff Code	8483.20.40.80
Noun	Bearing
Keyword String	Pillow Block
Manufacturer URL	http://www.dodge-pt.com
Manufacturer Item Number	P2B-EXL-303R
Manufacturer Internal Number	077240
Weight / LBS	73
Bolt Spacing Maximum	11.75 Inch 298.45Millimeter
Nominal Bolt Center to Center	10.7 Inch 271.5 Millimeter
Actual Bolt Center to Center	0 Inch 0Millimeter
Bolt Spacing Minimum	10.12 Inch 257.048Millimeter
B	3.75 Inch 95.25 Millimeter
D	5 Inch 127 Millimeter
d	3.188 Inch 80.975 Millimeter