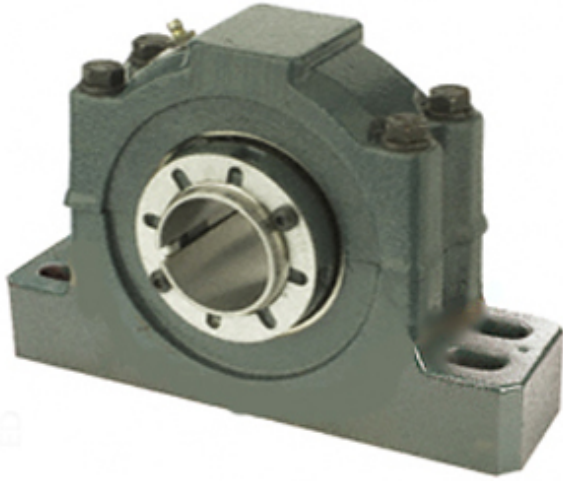




Wuxi LZH Bearing Co., Ltd.



P4B517-ISAF-215R Bearing 2D drawings and 3D CAD models

2.938 Inch | 74.625 Millimeter x 3.5 Inch | 88.9 Millimeter x 3.75 Inch | 95.25 Millimeter DODGE P4B517-ISAF-215R Pillow Block Bearings

Bearing No. P4B517-ISAF-215R

Category	Pillow Block Bearings
Inventory	0.0
Manufacturer Name	ABB MOTORS AND MECHANICAL INC
Minimum Buy Quantity	N/A
Weight	17.888
EAN	0782475310883
Product Group	M06288
Number of Mounting Holes	4
Mounting Method	Adapter Sleeve
Housing Style	4 Bolt Pillow Block
Rolling Element	Spherical Roller Bearing
Housing Material	Cast Iron
Expansion / Non-expansion	Non-expansion
Mounting Bolts	5/8 Inch
Relubricatable	Yes
Insert Part Number	INS-IP-215R
Seals	Triple Lip Contact
Housing Configuration	2 Piece Split
Inch - Metric	Inch
Other Features	Double Row Has Flinger
Long Description	4 Bolt Pillow Block; 2-15/16" Bore; 3-3/4" Base to Center Height; Adapter Sleeve Mount; Spherical Roller Bearing; 9-7/8"



Wuxi LZH Bearing Co., Ltd.

	Minimum Bolt Spacing; 11" Bolt Spacing Maximum; Relubricata
Category	Pillow Block
UNSPSC	31171511
Harmonized Tariff Code	8483.20.40.80
Noun	Bearing
Keyword String	Pillow Block
Manufacturer URL	http://www.dodge-pt.com
Manufacturer Item Number	P4B517-ISAF-215R
Manufacturer Internal Number	070059
Weight / LBS	39.4
Bolt Spacing Minimum	9.875 Inch 250.83Millimeter
Nominal Bolt Center to Center	10.4 Inch 264.2 Millimeter
d	2.938 Inch 74.625 Millimeter
Bolt Spacing Maximum	11 Inch 279.4Millimeter
B	3.75 Inch 95.25 Millimeter
D	3.5 Inch 88.9 Millimeter
Actual Bolt Center to Center	0 Inch 0Millimeter