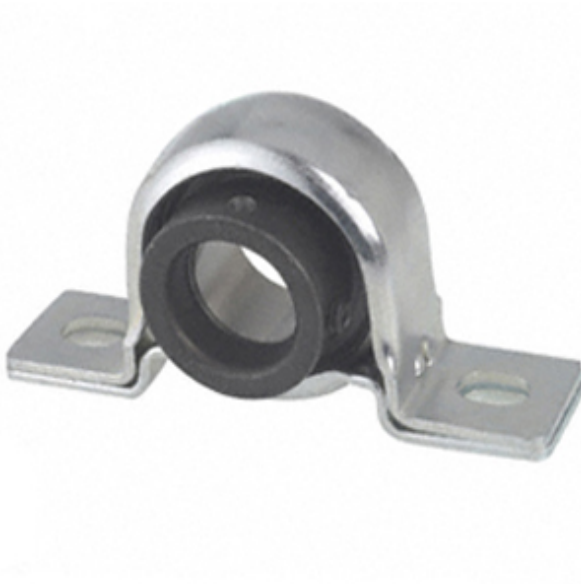




# Wuxi LZH Bearing Co., Ltd.



PB1 1/4S Bearing 2D drawings and 3D CAD models

1.25 Inch | 31.75 Millimeter x 0 Inch | 0  
Millimeter x 1.313 Inch | 33.35 Millimeter  
TIMKEN PB1 1/4S Pillow Block Bearings

Bearing No. PB1 1/4S

Category	Pillow Block Bearings
Inventory	0.0
Manufacturer Name	TIMKEN
Minimum Buy Quantity	N/A
Weight	0.48
EAN	0087796058439
Product Group	M06110
Number of Mounting Holes	2
Mounting Method	Eccentric Collar
Housing Style	2 Bolt Pillow Block
Rolling Element	Ball Bearing
Housing Material	Zinc Coated Stamped Steel
Expansion / Non-expansion	Non-expansion
Relubricatable	No
Insert Part Number	RA103RRB2
Seals	Double Land Riding Rubber Contact
Housing Configuration	2 Piece Split
Inch - Metric	Inch
Other Features	Single Row   Spherical   Light Duty   Smaller Housing   With Set Screw
Long Description	2 Bolt Pillow Block; 1-1/4" Bore; 1-5/16" Base to Center Height; Eccentric Collar Mount; Ball Bearing; 3" Minimum Bolt Spacing;



## Wuxi LZH Bearing Co., Ltd.

	4-1/8" Bolt Spacing Maximum; No Relubricatable; Zinc
Category	Pillow Block
UNSPSC	31171511
Harmonized Tariff Code	8483.20.40.40
Noun	Bearing
Keyword String	Pillow Block
Manufacturer URL	<a href="http://www.timken.com">http://www.timken.com</a>
Manufacturer Item Number	PB 1 1/4S
Weight / LBS	1.05
Bolt Spacing Maximum	4.125 Inch   104.775Millimeter
d	1.25 Inch   31.75 Millimeter
Nominal Bolt Center to Center	3.6 Inch   92 Millimeter
Bolt Spacing Minimum	3 Inch   76.2Millimeter
D	0 Inch   0 Millimeter
B	1.313 Inch   33.35 Millimeter
Actual Bolt Center to Center	0 Inch   0Millimeter